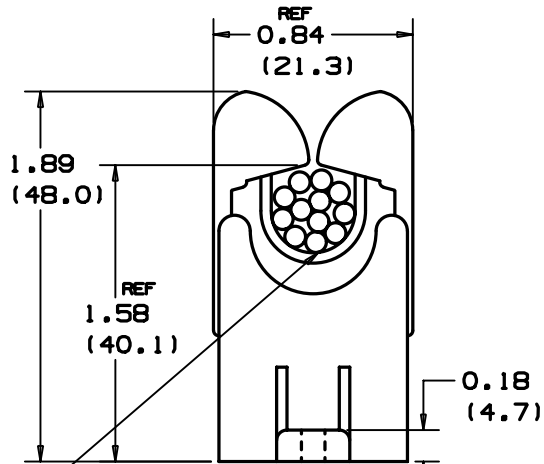
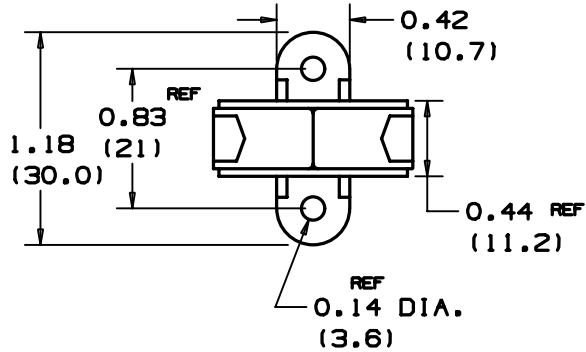
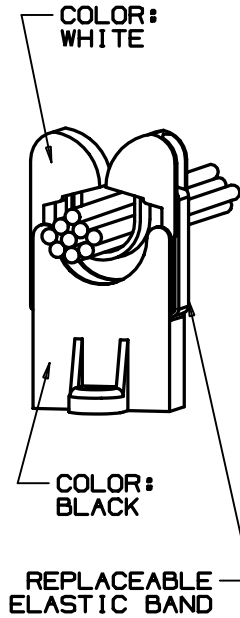


THIS COPY IS PROVIDED ON A RESTRICTED BASIS AND IS NOT TO BE USED IN ANY WAY DETRIMENTAL TO THE INTERESTS OF PANDUIT CORP.



TYPICAL APPLICATION SHOWING BUNDLED WIRES



PANDUIT PART NO.	MAX. BUNDLE DIA. in/mm	RECM. FASTENER	WEIGHT lb/g/100 pcs
RER.5-S6	0.5 (12.7)	#6 SCRW. (M3)	1.6 (720)

NOTES:
1. SEE CURRENT PRICE SHEET FOR PART NUMBER SUFFIX DESIGNATION FOR PACKAGE SIZE

(DIMENSIONS IN PARENTHESES ARE IN METRIC.)

CAD FILENAME/LAYER

G00239HW_PB_RER.5_01

PANDUIT

CORP.

TINLEY PARK, ILLINOIS

ELASTIC RETAINER, RER.5-S6

UNLESS OTHERWISE SPECIFIED,
DIMENSIONAL TOLERANCES ARE:
(.X) ±N/A (.XXX) ±N/A
(.XX) ±.020(.5) ANGLES ±5°

UNLESS OTHERWISE SPECIFIED,
ALL DIMENSIONS ARE GIVEN
IN INCHES, THIRD ANGLE PROJECTION.

1	7/21/03	JAD		UPDATE ARM MATERIAL	G80239HM	1				DRAWN BY	LGG	MAT'L:		SCALE	FULL
R	6/19/01	LGG		INITIAL RELEASE REPLACED SS-15049	G80239HM	R				DATE	6/19/01	NYLON BASE & RUBBER MODIFIED NYLON 6/6 ARM	DRAWING NO.		
REV	DATE	BY	CHK	DESCRIPTION	ECN	R	CUST	SUP		DRW'D			G80239HM		DWG SIZE A